

History:

The Belvedere Tiburon Child Care Center was established in 1974 to serve the Town of Tiburon and City of Belvedere. In 1984, an afterschool program was created to fill the need of a newly bustling student population. The original Belvedere School Site was closed in 1987 and the preschool and afterschool programs relocated to our current location across the field from Reed School. The BTCCC was incorporated in August of 1988 as a non-profit corporation.

Administration:

The BTCCC is managed by a volunteer Board of Directors. The Board administers policies, fiscal responsibilities, and maintains licensing standards. The Executive Director implements policies and supervises the teaching staff.

Drop-In Care:

Drop-in care is offered on a space-available basis. Registration and enrollment forms have to be completed prior to attendance. Drop-in care must be arranged prior to attendance.

Morning Drop-In:

Attending between the hours of 7am and 8am is considered drop-in care and is subject to drop-in charges.

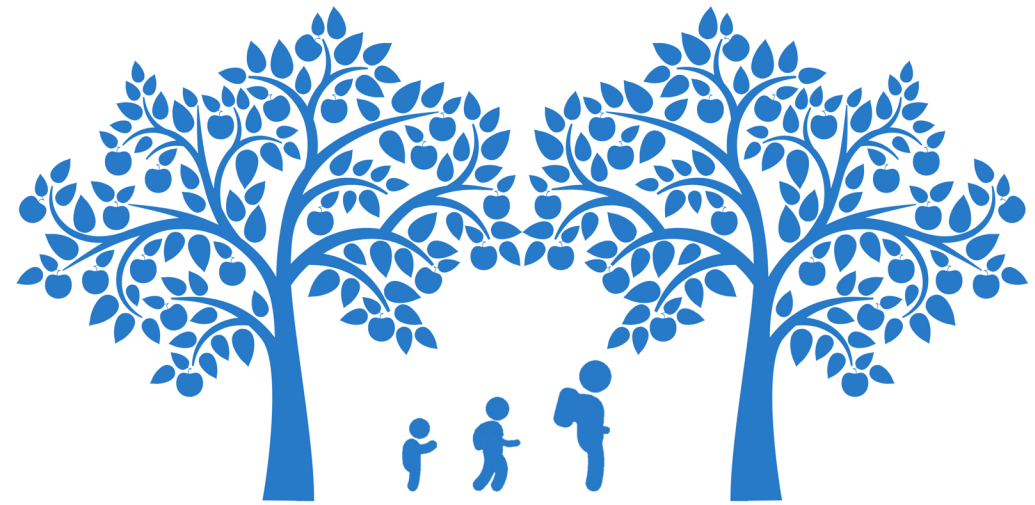
Registration:

All forms must be completed and submitted to the BTCCC office with the proper fees before the first day of attendance.

Waitlist:

To be added to the waitlist for either the school-age or pre-school program, please call the BTCCC office at (415) 435-4366 to set up a tour prior to getting on the waitlist.

Belvedere Tiburon Child Care Center



Where FUN Happens!

Reed Site

1185 Tiburon Blvd.
Tiburon, CA. 94920
(415) 435-4366

Bel Aire Site

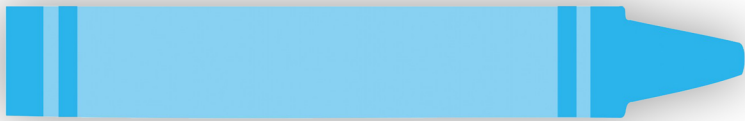
277 Karen Way
Tiburon, CA. 94920
(415) 381-2243

btccc.org
tiburonadventurecamp.org
Fax: (415) 435-0943

Preschool Program

Facility #21010916

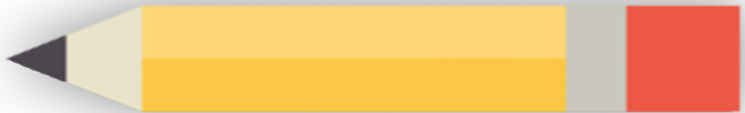
The BTCCC Preschool program operates at the Reed School site from 8am to 6pm. Children are welcome as early as 7am, but would be considered drop-in and are subject to additional fees. Classes offered are designed for both full or part-time schedules and **children do not have to be potty trained to attend preschool**. Children are divided into groups according to age, but they also have the opportunity to play with children from other age groups during indoor and outdoor free time. Age-appropriate activities are offered daily such as: cooking, painting, arts and crafts, circle time, music, storytelling, dancing, and much more.



Reed Before/Afterschool Program

Facility #214005125

Before and afterschool care is offered for children grades K through 2nd at the Reed School site. Two to five day schedules are available. Afterschool care takes place from dismissal time to 6pm, but students are welcome before school from 7am to 8am for an additional fee. The BTCCC offers time for homework as well as activities including arts & crafts, cooking, construction, games, sports, dance, media time, and much more.



Bel Aire Afterschool Program

Facility #210110112

Afterschool care is offered at Bel Aire Elementary for children grades 3rd through 5th. Two to five day schedules are available for students. Time for homework is facilitated daily and activities available to the students include arts and craft projects, cooking, legos, outdoor sports, pool, air hockey, and media time.

*No morning care is offered at the Bel Aire site.



Tiburon Adventure Camp

Sharks Program Ages 5-8

School-aged children can join the fun as our awesome staff facilitate summer fun right in your backyard! Each week is a new theme, but the same old fun! Weekly or daily schedules are available. Weekly activities include jumpees, field trips, library visits, swimming lessons, arts & crafts activities, and much more!

Dolphins Program Ages 2-5

Preschool-aged children are treated to themed weeks which include activities and fun games tailored to each theme! Weekly jumpees and tons of fun await as the BTCCC welcomes both weekly and daily schedules, as well as half and full-days. Sign up for this summer and start making memories!